

MSLR450 series (Double pump)

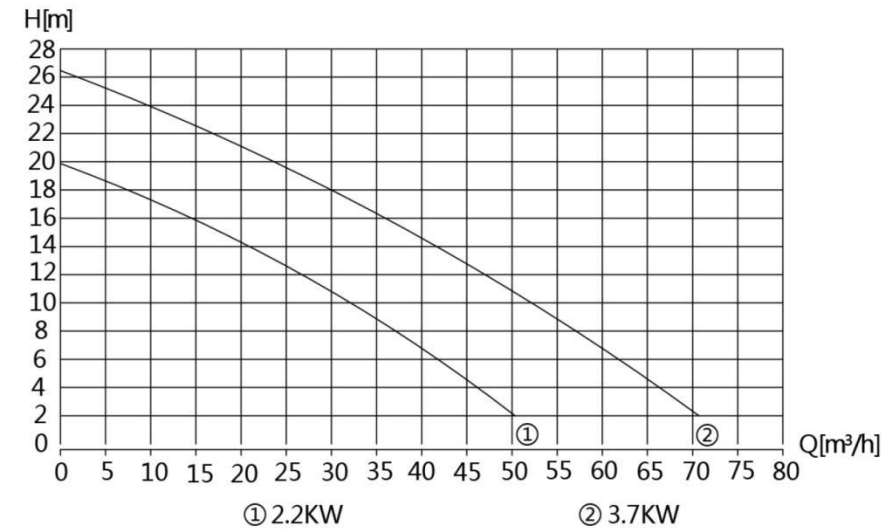


Product description

MSLR 450 series is a large capacity double pump system lifting equipment. It is mainly used for upgrading domestic sewage produced by large commercial complex, public enterprises and institutions, large public places, multi family type, etc. it is suitable for continuous large flow drainage places. The double pump system is standby for each other. Under normal conditions, the double pump can operate alternately, and the double pump can be started at the same time when the flow peak. If one of the pumps fails, the system will automatically switch to the single pump operation mode, screen the faulty pump and alarm display, greatly improving the service life and maintenance cost of the equipment. Power supply: 380V / 220V

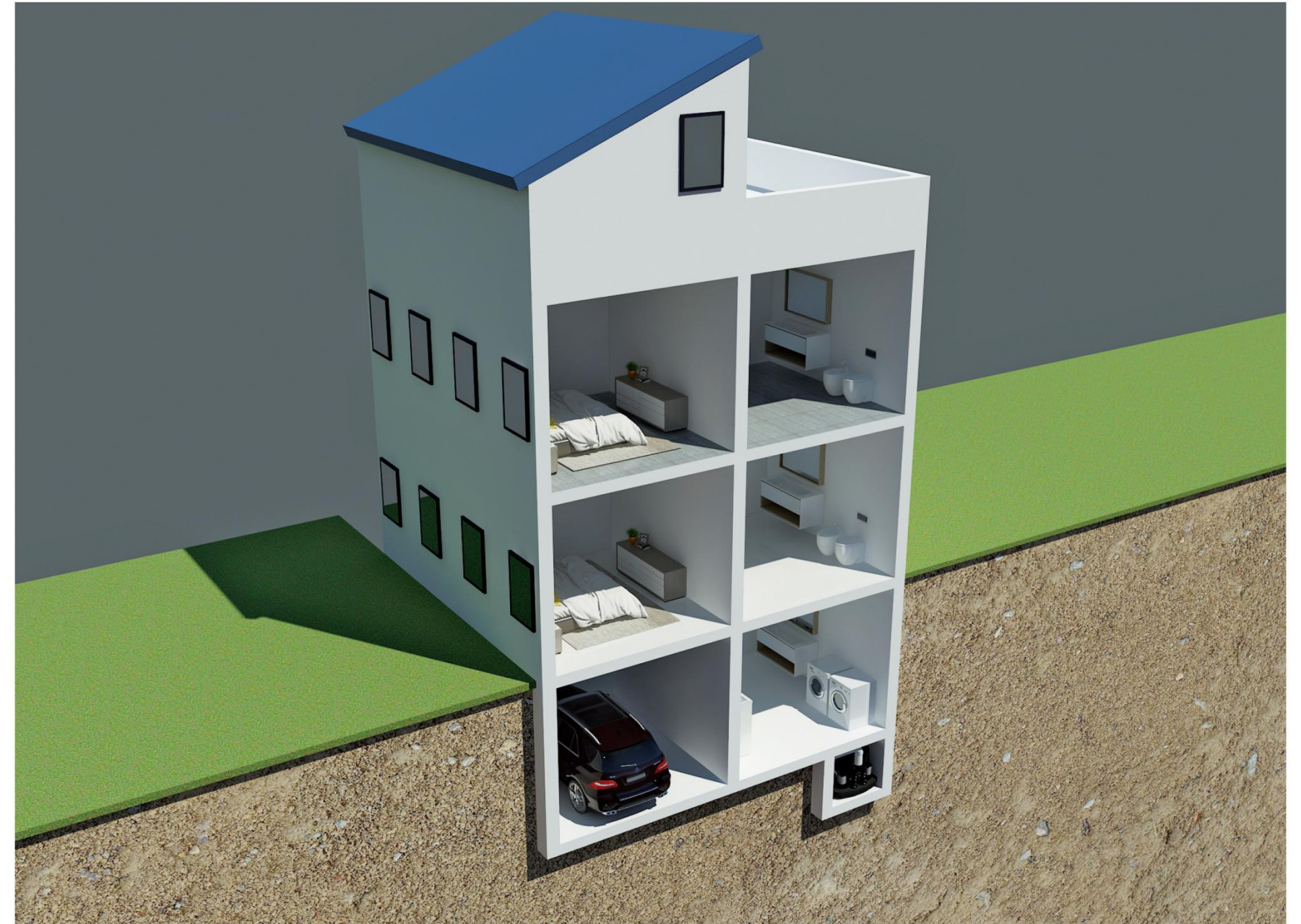
MSLR 450 series box is made of corrosion-resistant and environment-friendly polyethylene PE material, with good airtightness and durability. The volume of the box is about 450L. Vertical and horizontal water inlets are reserved in various directions for easy installation.

Performance curve



Performance parameter

- ※ The pump is non blocking vortex impeller, and the optional power is 2.2kw-3.7kw
- ※ Pump body material HT250, SUS304
- ※ Eddy current impeller material HT250 shaft material sus410
- ※ The maximum flow diameter is 60mm
- ※ The maximum starting times of water pump are 120 times / h
- ※ DN80 check valve included
- ※ The cable length between standard controller and water pump / floating ball is 5m
- ※ Outlet diameter DN80 vertical outlet (variable diameter)
- ※ Starting mode: air pressure / floating ball double level control, original double protection
- ※ Waterproof grade: IP68 (excluding control box)
- ※ Anti floating fixed installation (anchor bolt)



Technical parameter

Model	The volume of water collecting tank is about(L)	Overflow diameter (mm)	Water inlet flange	Outlet flange	Outlet pipe	Ventilation tube	Weight (kg)
MSLR450L220D	450	60	DN150/DN100optional	DN80	DN80	DN40	155
MSLR450L370D	450	60	DN150/DN100optional	DN80	DN80	DN40	162

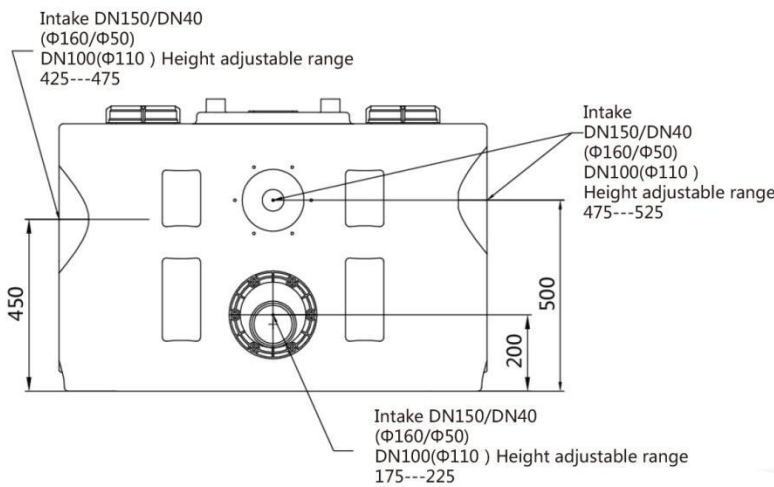
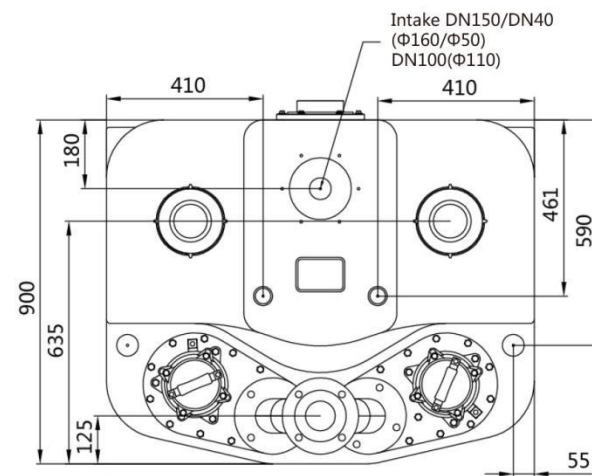
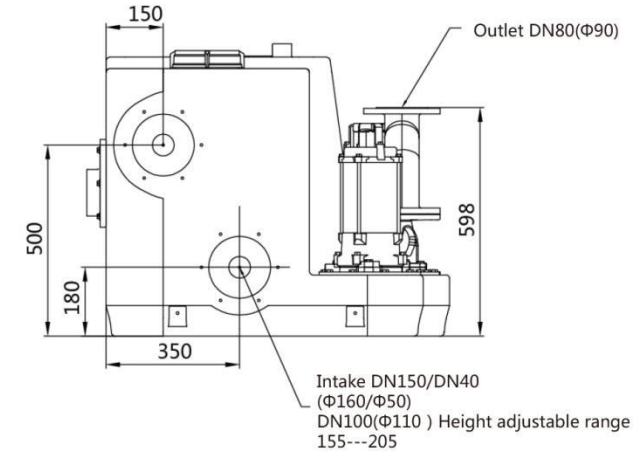
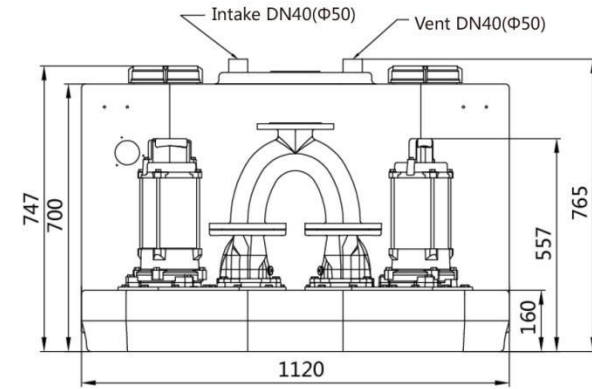
Selection table

Model	Power (KW)	Voltage (V)	Current (A)	Effluent caliber	Lift (m)	2	4	6	8	10	12	14	16	18	20	22	24	26	28		
MSLR450L220D	2.2	220	11.2	DN80	Flow (m ³ /m)	50	45	41	36	31	26	20	12	7							
MSLR450L220D	2.2	380	5.8			50	45	41	36	31	26	20	12	7							
MSLR450L370D	3.7	380	7.5			71	66	62	57	52	47	42	36	30	24	17	9				

Accessories list

Number	Accessories description	Specification and size	Number	Remarks
1	controller	NK-2	1	Standard configuration
2	Ventilation flexible connection	DN40	1	Standard configuration
3	Soft connection of water inlet	DN100	1	Standard configuration
4	Soft connection of water outlet	DN80	1	Standard configuration
5	Water inlet flange	DN150/DN100	1	Standard configuration
6	Outlet flange	DN80	1	Standard configuration
7	Water inlet stop valve	DN150/DN100	1	Matching
8	Water outlet stop valve	DN80	1	Matching
9	Water outlet stop valve of auxiliary pump	DN40	1	Matching
10	Auxiliary pump	/	1	Matching

Equipment dimension drawing



Installation diagram

